

CORROSION RESISTANT MEDIUM DUTY (X SERIES) BEARING UNITS

IPTCI® B E A R I N G S

IPTCI Bearings introduces a heavier duty solution for your wash down applications. Using the same proven corrosion resistant materials and moisture resistant seals as IPTCI's standard All Stainless series, the SUCX series, offers a new alternative for applications where additional load capacity is required. IPTCI medium duty SUCX series is available in pillow block, 4-bolt flange, 2-bolt flange, wide slot take up, and piloted flange. Stock sizes include 1", 1 3/16", 1 7/16", 1 1/2", 1 3/4" & 1 15/16".

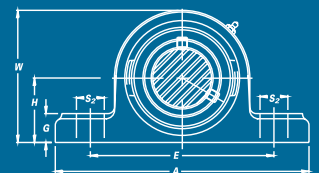
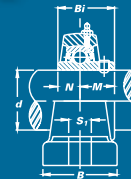
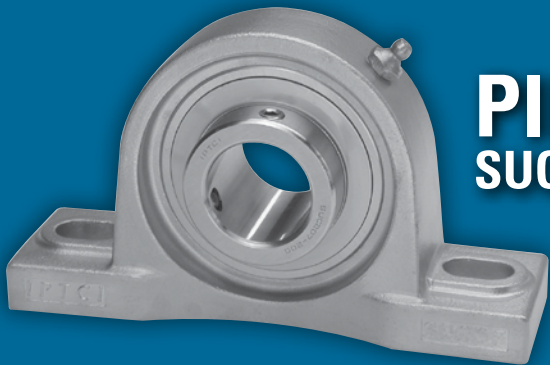
All units are set screw locking and are made from the following materials:

Balls & Rings	440 Stainless Steel
Seal	Silicone Rubber
Seal Frame & Slinger	302 Stainless Steel
Retainer	302 Stainless Steel
Set Screws	410 Stainless Steel
Lubrication	H-1 Food Grade Grease
Housing	304 Stainless Steel



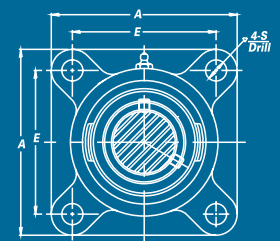
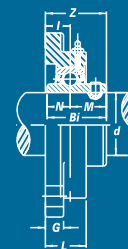
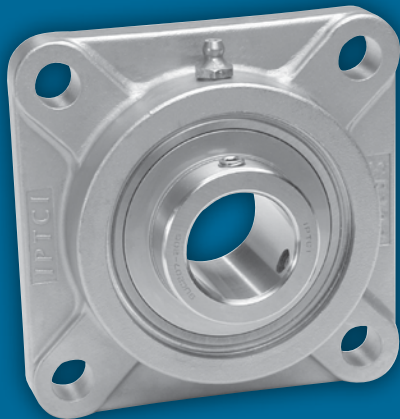
B-type Seal

PILLOW BLOCK SUCSPX



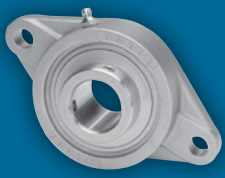
Unit No.	Shaft Dia.	H	A	E	B	S2	S1	G	W	Bi	M	Bolt Used	Weight (lbs.)
SUCSPX05-16	1"	1 11/16"	6 13/32"	4 3/4"	1 27/32"	13/16"	9/16"	11/16"	3 19/64"	1.5000	0.8740	1/2"	3.5
SUCSPX06-19	1 3/16"	1 7/8"	6 17/32"	5"	1 29/32"	7/8"	9/16"	3/4"	3 11/16"	1.6890	1.0000	1/2"	4.3
SUCSPX07-23	1 7/16"	2 1/8"	7 1/4"	5 1/2"	1 15/16"	7/8"	9/16"	25/32"	4 3/16"	1.9370	1.1890	1/2"	5.5
SUCSPX08-24	1 1/2"	2 1/8"	7 1/2"	5 3/4"	2 1/16"	13/16"	19/32"	25/32"	4 7/32"	1.9370	1.1890	1/2"	6.1
SUCSPX09-28	1 3/4"	2 1/4"	8"	6 1/4"	2 5/16"	15/16"	23/32"	7/8"	4 1/2"	2.0315	1.2835	5/8"	7.5
SUCSPX10-31	1 15/16"	2 1/2"	8 17/32"	6 7/8"	2 3/8"	15/16"	23/32"	7/8"	4 15/16"	2.1890	1.3150	5/8"	8.8

4-BOLT FLANGE SUCSFX

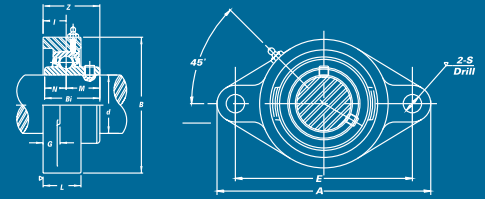


Unit No.	Shaft Dia.	A	E	I	G	L	S	Z	Bi	M	Bolt Used	Weight (lbs.)
SUCSFX05-16	1"	4 1/4"	3 1/4"	45/64"	1/2"	1 7/32"	33/64"	1 19/32"	1.5000	0.8740	7/16"	3.0
SUCSFX06-19	1 3/16"	4 19/32"	3 5/8"	3/4"	19/32"	1 11/32"	33/64"	1 3/4"	1.6890	1.0000	7/16"	4.0
SUCSFX07-23	1 7/16"	5 1/8"	4"	53/64"	19/32"	1 13/32"	35/64"	2 1/32"	1.9370	1.1890	1/2"	5.0
SUCSFX08-24	1 1/2"	5 13/32"	4 1/8"	55/64"	5/8"	1 1/2"	5/8"	2 1/16"	1.9370	1.1890	9/16"	5.7
SUCSFX09-28	1 3/4"	5 5/8"	4 3/8"	55/64"	5/8"	1 9/16"	5/8"	2 5/32"	2.0315	1.2835	9/16"	6.3
SUCSFX10-31	1 15/16"	6 3/8"	5 1/8"	63/64"	23/32"	1 11/16"	43/64"	2 5/16"	2.1890	1.3150	5/8"	9.3

800 328 8153



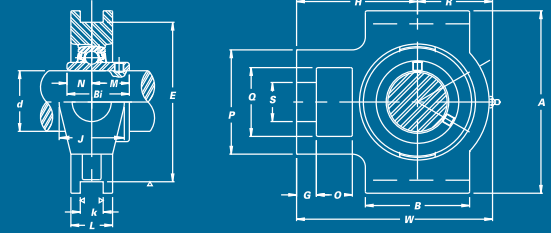
2-BOLT FLANGE SUCSFLX



Unit No.	Shaft Dia.	A	E	I	G	L	S	B	Z	Bi	M	Bolt Used	Weight (lbs.)
SUCSFLX05-16	1"	5 9/16"	4 19/32"	45/64"	1/2"	1 7/32"	15/32"	3 5/32"	1 19/32"	1.5000	0.8740	3/8"	2.2
SUCSFLX06-19	1 3/16"	6 1/8"	5 1/8"	3/4"	9/16"	1 11/32"	33/64"	3 17/32"	1 3/4"	1.6890	1.0000	7/16"	3.0
SUCSFLX07-23	1 7/16"	6 3/4"	5 21/32"	53/64"	9/16"	1 13/32"	33/64"	3 15/16"	2"	1.9370	1.1890	7/16"	3.8
SUCSFLX08-24	1 1/2"	7 1/16"	5 27/32"	55/64"	19/32"	1 1/2"	19/32"	4 1/4"	2 1/16"	1.9370	1.1890	1/2"	4.6
SUCSFLX09-28	1 3/4"	7 7/16"	6 3/16"	55/64"	19/32"	1 9/16"	19/32"	4 17/32"	2 5/32"	2.0315	1.2835	1/2"	5.4



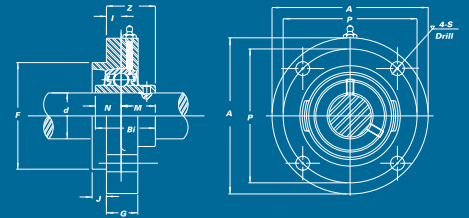
TAKE UP SUCSTX Wide Slot



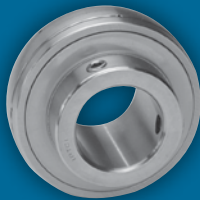
Unit No.	Shaft Dia.	O	G	P	Q	S	B	K	E	A	W	J	L	H	Bi	M	Weight (lbs.)
SUCSTX05-16	1"	5/8"	13/32"	2 7/32"	1 15/32"	55/64"	2 1/4"	17/32"	3 1/2"	4 1/32"	4 7/16"	1 15/32"	1 3/32"	2 3/4"	1.5000	0.8740	2.9
SUCSTX06-19	1 3/16"	5/8"	1/2"	2 17/32"	1 15/32"	55/64"	2 17/32"	17/32"	3 1/2"	4 1/32"	5 3/32"	1 15/32"	1 3/16"	3 1/16"	1.6890	1.0000	3.7
SUCSTX07-23	1 7/16"	3/4"	5/8"	3 9/32"	1 15/16"	1 9/64"	3 9/32"	11/16"	4"	4 1/2"	5 21/32"	1 15/16"	1 5/16"	3 15/32"	1.9370	1.1890	5.5
SUCSTX08-24	1 1/2"	3/4"	5/8"	3 9/32"	1 15/16"	1 9/64"	3 9/32"	11/16"	4"	4 19/32"	5 21/32"	1 15/16"	1 3/8"	3 7/16"	1.9370	1.1890	5.5
SUCSTX09-28	1 3/4"	3/4"	5/8"	3 9/32"	1 15/16"	1 9/64"	3 3/8"	11/16"	4"	4 19/32"	5 7/8"	1 15/16"	1 15/32"	3 17/32"	2.0315	1.2835	5.7



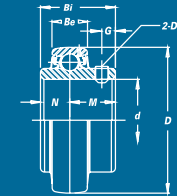
PILOTED FLANGE SUCSFC SX



Unit No.	Shaft Dia.	A	P	S	J	G	F	I	Z	Bi	M	Bolt Used	Weight (lbs.)
SUCSFCX05-16	1"	4 3/8"	3 5/8"	3/8"	15/64"	49/64"	3.000	25/64"	1 9/32"	1.5000	0.8740	5/16"	2.9
SUCSFCX06-19	1 3/16"	5"	4 1/8"	15/32"	3/8"	45/64"	3.375	5/16"	1 5/16"	1.6890	1.0000	3/8"	3.9
SUCSFCX07-23	1 7/16"	5 1/4"	4 3/8"	15/32"	7/16"	49/64"	3.625	23/64"	1 17/32"	1.9370	1.1890	3/8"	4.8
SUCSFCX08-24	1 1/2"	5 1/4"	4 3/8"	15/32"	7/16"	25/32"	3.625	23/64"	1 17/32"	1.9370	1.1890	3/8"	5.5
SUCSFCX09-28	1 3/4"	6 3/32"	5 1/8"	35/64"	15/32"	25/32"	4.250	5/16"	1 19/32"	2.0315	1.2835	7/16"	6.1



BEARING INSERTS SUCX



Bearing No.	Shaft Dia.	D	Bi	Be	N	M	G	Ds (in.)	Basic Load Rating (lbs.)	Basic Static Load Rating (lbs.)	Weight (lbs.)
SUCX05-16	1"	2.4409	1.5000	0.7480	0.6260	0.8740	0.2362	1/4-28UNF	3,710	2,020	0.8
SUCX06-19	1 3/16"	2.8346	1.6890	0.7874	0.6890	1.0000	0.2559	5/16-24UNF	4,930	2,780	1.3
SUCX07-23	1 7/16"	3.1496	1.9370	0.8268	0.7480	1.1890	0.3150	5/16-24UNF	5,660	3,300	1.6
SUCX08-24	1 1/2"	3.3465	1.9370	0.8661	0.7480	1.1890	0.3150	5/16-24UNF	6,230	3,680	1.9
SUCX09-28	1 3/4"	3.5433	2.0315	0.9449	0.7480	1.2835	0.3543	3/8-24UNF	6,590	4,070	2.1
SUCX10-31	1 15/16"	3.9370	2.1890	0.9843	0.8740	1.3150	0.3543	3/8-24UNF	7,780	4,890	2.9



952 224 7030
fax 952 224 7039
sales@IPTCI.com
IPTCI.com

800 328 8153