

# D&D Harvester Belts



D & D provides an extensive OEM replacement line of HEAVY DUTY HARVESTER BELTS. Providing both Aramid (Kevlar®) cord and Polyester cord single, banded, wrapped, raw edge, smooth and cogged belt options, D & D is able to provide you HIGH QUALITY, COMPETITELY PRICED replacement belts for all of your harvester belt needs.

Distributors can link into our B2B system and reference many of the belt numbers by the OEM number to find the D & D crossing size. D & D belts can be used as replacements on harvester equipment in cotton, peanut, bean, corn, potato, and many other markets.

Some of the brand applications that you may identify with include but are not limited to AMADAS™, ALLIS CHALMERS™, CASE IH™, CLAAS™, FORD / NEW HOLLAND™, JOHN DEERE™, KMC™, LAVERDA™, MASSEY FERGUSON™, and WHITE™. Other brand replacement belts are also available.

If you are a distributor of replacement parts, please go to our website at [www.ddglobal.com](http://www.ddglobal.com) or email us at [sales@ddglobal.com](mailto:sales@ddglobal.com).



D&D Global Inc.  
2672 Rock Ridge Dr  
Rock Valley, IA. 51247

877-784-9267  
[sales@ddglobal.com](mailto:sales@ddglobal.com)  
[www.ddglobal.com](http://www.ddglobal.com)



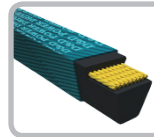
DD18HAR

# D&D Product Listing



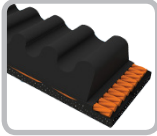
## **Dura-Prime Classical**

3L	A/4L	B/5L
C	D	E



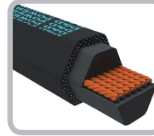
## **DURA-Ultimate DW-Blade**

3LK	4LK/AK	5LK/BK
-----	--------	--------



## **DURA-Extreme Classical**

AX	BX	CX
----	----	----



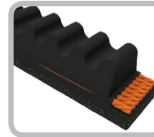
## **DURA-Prime Hex**

AA	BB	CC
----	----	----



## **DURA-Prime Wedge**

3V	5V	8V
----	----	----



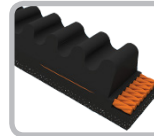
## **DURA-Ultimate Wedge**

3VX	5VX	8VX
-----	-----	-----



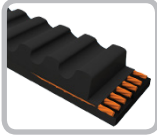
## **DURA-Prime Metric**

SPA	SPB	SPC	SPZ
-----	-----	-----	-----



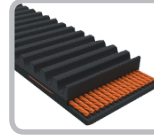
## **DURA-Extreme Metric**

XPA	XPB
XPC	XPZ



## **DURA-Prime Auto Wedge**

15	17	22	24
28	30	TB	

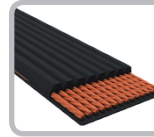


## **DURA-Prime VS**



## **DURA-Link**

TL3L	TLA
TLB	TLC



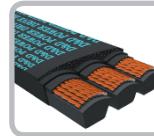
## **DURA-Prime Rib Pro Serpentine**

J	K	L	M
---	---	---	---



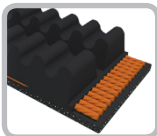
## **DURA-Prime Band Classical**

A	B	C	D
---	---	---	---



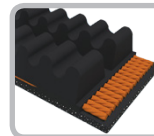
## **DURA-Ultimate Band**

3VK	5VK
8VK	BK



## **DURA-Extreme Band Classical**

AX	BX	CX
----	----	----



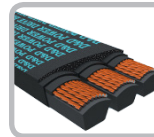
## **DURA-Extreme Band Wedge**

3VX	5VX
-----	-----



## **DURA-Prime Band Wedge**

3V	5V	8V
----	----	----



## **DURA-Prime Band Metric**

SPA	SPB	SPC
-----	-----	-----

D&D Global Inc.  
2672 Rock Ridge Dr  
Rock Valley, IA. 51247



877-784-9267  
sales@ddglobal.com  
www.ddglobal.com